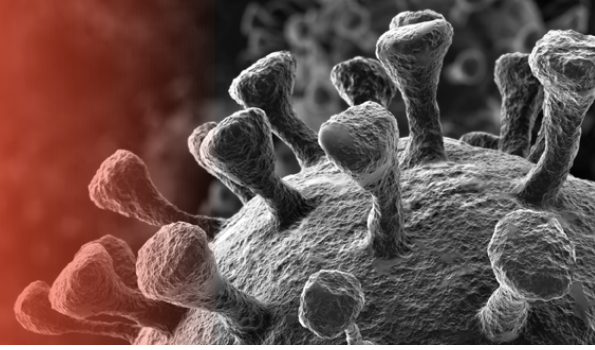


United Way of Central Oklahoma,
Canadian & Logan Counties



COVID-19 Response Fund Established to Support United Way of Central Oklahoma, Canadian and Logan Counties

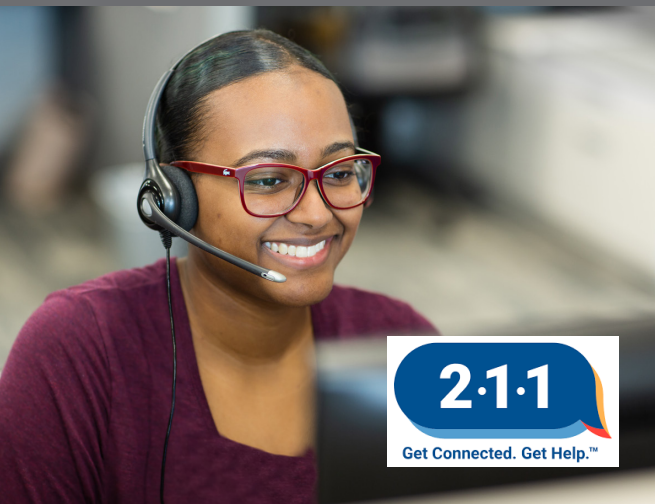
If you are looking for a way to help support our community's most vulnerable citizens who are experiencing hardships due to the COVID-19 pandemic, the United Way of Central Oklahoma has established the COVID-19 Response Fund to support Partner Agencies of United Way of Central Oklahoma, United Way of Logan County and United Way of Canadian County.

Dedicated to increasing resilience among our most vulnerable individuals and families, the COVID-19 Response Fund will be used to address the needs of those individuals who are experiencing COVID-19 related hardship primarily due to temporary unemployment, lost income or unexpected expenses related and due to COVID-19.

"As the COVID-19 pandemic impacts our community, we know that we must come together to protect the most vulnerable among us," Debby Hampton, United Way of Central Oklahoma President and CEO said. "We have created this fund to ensure that our Partner Agencies are able to help those throughout our communities who need it most during this crisis."

Donate Now at unitedwayokc.org

Thank you for going above and beyond your existing support of United Way during this critical time.



Oklahomans Encouraged to Call 2-1-1 with COVID-19 Questions

Oklahomans who have questions about COVID-19 and its impact on our community, or who need help finding food, paying housing bills, accessing free childcare or other services can call 2-1-1 for a free referral service available 24-hours each day.

Managed by HeartLine, a United Way Partner Agency, 2-1-1 offers callers a compassionate voice to provide comfort and guide them to the appropriate health and human service for their situation.

United Way of Central Oklahoma Business Operations to Continue

Beginning March 23, 2020, United Way of Central Oklahoma's office will cease all in-person meetings, but business operations will continue seamlessly for the United Way of Central Oklahoma, United Way of Canadian County and United Way of Logan County. These measures have been taken to ensure the health and safety of our staff, volunteers, Partner Agencies, as well as our community. Please contact the Resource Development team with any questions.